



CALL FOR THE 2ND SADC-GMI YOUNG PROFESSIONAL WINTER SCHOOL!!

Theme: From Borehole to Basin: Sustainable Groundwater Management for communities

Date: 29th June – 10th July 2026

Location: University of the Free State's Institute of Groundwater Studies, Bloemfontein, South Africa

“Ignite Your Potential: Join the SADC-GMI Young Professionals Winter School.”





ARE YOU READY TO TURN POTENTIAL INTO IMPACT?

Water is the lifeblood of the SADC region. As we face increasing climate challenges and growing demand, the next generation of groundwater leaders must be ready to bridge the gap between local solutions and regional sustainability.

Following the overwhelming success of our inaugural Winter School programme in 2025, the SADC Groundwater Management Institute (SADC-GMI), in partnership with the University of the Free State's Institute for Groundwater Studies, is proud to put out a call for the 2nd SADC-GMI Young Professionals Winter School.

This is more than just a training programme. It is a two-week immersive journey designed to move you from theory to practice. Whether you are working at the community level or looking toward basin-scale governance, this Winter School will equip you with the technical expertise, systems thinking, and leadership skills to drive integrated groundwater management across our region.

WHY JOIN THE WINTER SCHOOL?

Master the Field: Gain hands-on experience in geophysics, GIS mapping, drilling, pumping tests, and groundwater sampling.

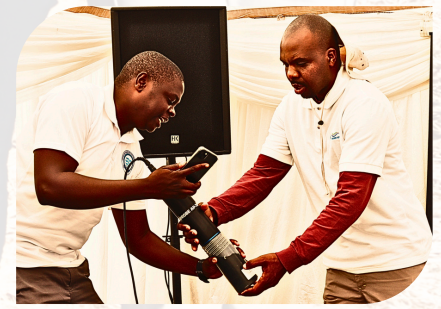
Bridge the Gap: Learn how to link community-level borehole management with long-term, basin-scale aquifer protection.

Lead the Change: Develop the skills to design financially viable, community-led groundwater solutions.

Build Your Legacy: Join a vibrant, cross-border network of peers. We are committed to fostering diverse leadership, with a strong focus on empowering women in groundwater research and policy.



HIGHLIGHTS OF THE INAUGURAL WINTER SCHOOL



THE LEARNING JOURNEY

Our intensive curriculum is divided into four pillars of excellence:

- **Foundational Hydrogeology:** Practical techniques for borehole siting, hydraulics, and monitoring.
- **Sustainable Infrastructure:** Master the lifecycle of groundwater systems, from design to maintenance.
- **Governance & Community:** Navigate policy, transboundary management, and social impact with ethics and confidence.
- **Innovation & Entrepreneurship:** Transform your ideas into fundable, impactful proposals that contribute to the SDGs.

ARE YOU OUR NEXT LEADER?

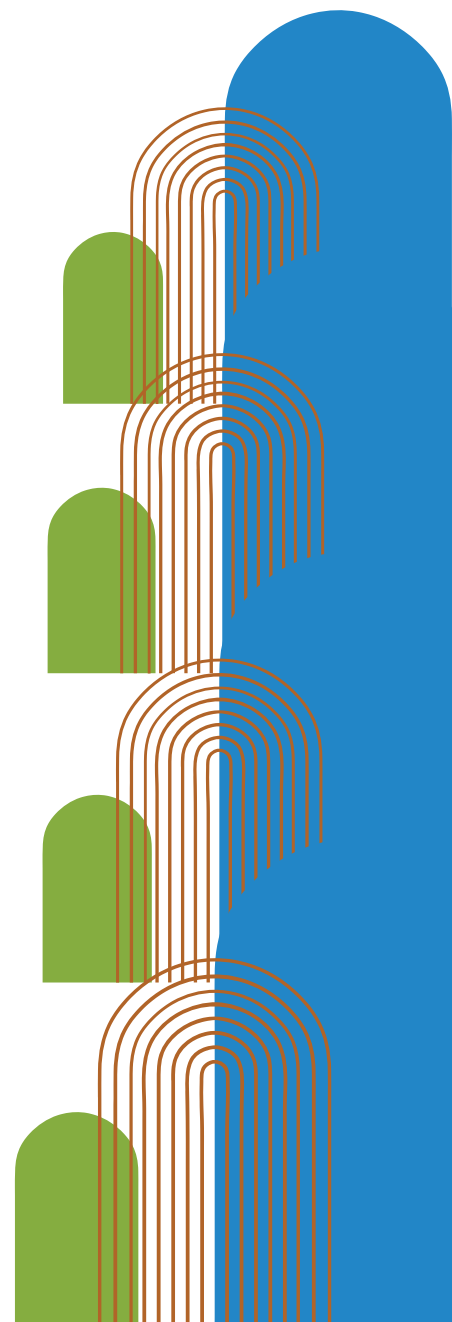
We are looking for passionate young professionals (35 or younger) who hold a bachelor's degree in a groundwater-related field and are eager to make a difference.

SELECTION CRITERIA

- Applicants must hold a minimum of a Bachelor's degree (or equivalent) in a field related to groundwater, such as hydrogeology, geology, environmental engineering, or water resource management.
- Be 35 years of age or younger at the time of the programme.
- **Regional Diversity:** We prioritize a balanced representation of talent from across the SADC region.

Your time is now! Be the leader who ensures that every borehole contributes to a thriving, water-secured basin.

Apply today and help us secure the future of water in the SADC region.



OUR TEAM OF EXPERTS

The Winter School modules will be facilitated by a team of experts drawn from across the SADC region, ensuring a balanced delivery of both theoretical frameworks and practical applications.



REGISTRATION AND PAYMENT DETAILS

The registration fee is **500 USD** per candidate; it covers tuition, training facilities, and refreshments (Tea and Lunch) for the duration of the Winter School. Young Professionals or their sponsors will have to cover travel and accommodation.

[REGISTER HERE](#)

Candidates are required to submit the designated payment to the following account by the specified deadline:

Account Name: SADC-GMI
Bank: ABSA
Account Number: 4107554267
Branch Code: 632005
SWIFT Code: ABSAZAJJ

Please ensure that proof of payment is submitted by email to monica@sadc-gmi.org and cc yp@sadc-gmi.org to confirm your registration.

For more information, visit our website:
www.sadc-gmi.org

